

# Worksheet 2/4

Name: \_\_\_\_\_

Write a G Major Scale on the staff  
(include key signature):

Example:

G A B C D E F# G

Identify the following Key Signatures:

no sharps or flats: C Major    F#: G Major    F# and C#: D Major

\_\_\_\_\_ Major

\_\_\_\_\_ Major

\_\_\_\_\_ Major

\_\_\_\_\_ Major

\_\_\_\_\_ Major

\_\_\_\_\_ Major

Name the following 3-Note Chords:

Example:

a minor    E Major    d minor

Add the following like an addition problem:

EX  $\text{♩} + \text{♩} + \text{♩} = 6$

$2 + 1 + 3 = 6$

$\text{♩} = .5 \text{ beats}$	$\text{♩} = 2 \text{ beats}$
$\text{♩} = 1 \text{ beat}$	$\text{♩} = 3 \text{ beats}$
$\text{♩} = 1.5 \text{ beats}$	$\text{♩} = 4 \text{ beats}$

$\text{♩} + \text{♩} + \text{♩} + \text{♩} + \text{♩} + \text{♩} + \text{♩} =$

$\text{♩} + \text{♩} + \text{♩} + \text{♩} + \text{♩} + \text{♩} + \text{♩} =$

$\text{♩} + \text{♩} + \text{♩} + \text{♩} + \text{♩} + \text{♩} + \text{♩} =$

$\text{♩} + \text{♩} + \text{♩} + \text{♩} + \text{♩} + \text{♩} + \text{♩} =$

Performance Portion:

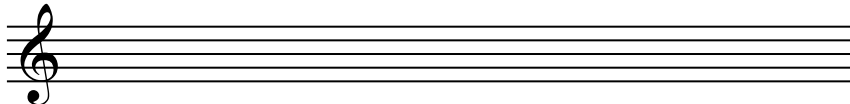
Be able to sight read a short example in G Major.

Be able to play an excerpt from your repertoire that your teacher selects.

# Quiz 2/4

Name: \_\_\_\_\_

1. Write a G Major Scale on the staff below using quarter notes (include the key signature)



2. Identify the following Key Signatures:



\_\_\_\_\_ Major

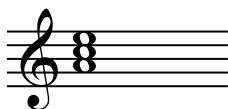


\_\_\_\_\_ Major



\_\_\_\_\_ Major

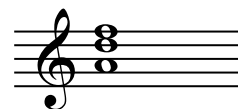
3. Identify the following 3-Note Chords:



\_\_\_\_\_



\_\_\_\_\_



\_\_\_\_\_

4. Add the following note values like an addition problem:

Ex.  $\text{♩} + \text{♩} + \text{♩} + \text{♩} + \text{♩} + \text{♩} + \text{♩} = 11$

$2 + 4 + 1 + 3 + 1/2 + 1/2 = 11$

$\text{♩} + \text{♩} + \text{♩} + \text{♩} + \text{♩} + \text{♩} + \text{♩} =$

$\text{♩} + \text{♩} + \text{♩} + \text{♩} + \text{♩} =$

Performance Portion:

1. Play the following example in G Major:



2. Play mm \_\_\_\_\_ to \_\_\_\_\_ from " \_\_\_\_\_ " with correct notes/rhythm, good tone, and appropriate dynamics