

# Worksheet 3/1

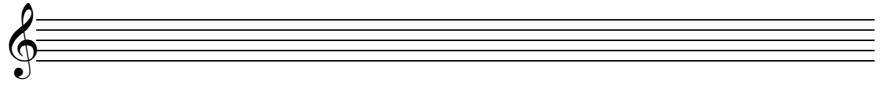
Name: \_\_\_\_\_

Draw the following notes on the staff provided:

Example:



C# B $\flat$  F# G D# E




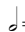




C# B B $\flat$  A G D# F# E C# F B $\flat$  G C

Identify the following Key Signatures:


no sharps or flats: C Major    F# : G Major    F# and C# : D Major



\_\_\_\_\_ Major    \_\_\_\_\_ Major    \_\_\_\_\_ Major    \_\_\_\_\_ Major    \_\_\_\_\_ Major    \_\_\_\_\_ Major

	= eighth note		= half note
	= quarter note		= dotted half
	= dotted quarter		= whole note

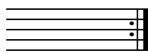
Draw the following note values on the staff:



Whole    Half    Quarter    Eighth    Dotted Quarter    Eighth    Dotted Half    Quarter    Dotted Quarter

Briefly explain the following symbols:

Example:

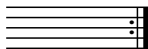


Repeat sign; indicates that the preceding passage of music should be repeated.

Example: *D.C. al Fine*



D.C. is short for Da Cappo. It means to repeat from the beginning up to the word *Fine*.



*D.S. al Fine*



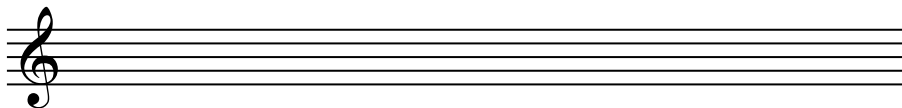
Performance Portion:

Be able to play a G Major Scale alternating i, m with good tone and legato style.

# Quiz 3/1

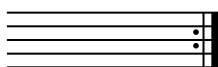
Name: \_\_\_\_\_

1. Draw the following notes on the staff provided:

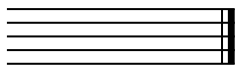


G    C $\sharp$     D    A    E    B $\flat$     D $\sharp$     F $\sharp$

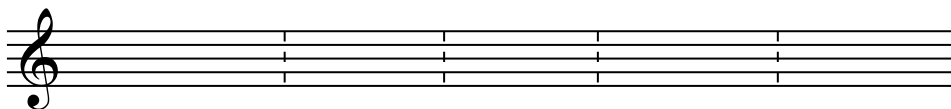
2. Explain the following symbols in 1 sentence:



*D.C. al Fine*



3. Draw the following note values on the staff below:



Dotted Quarter    Half    Eighth    Whole    Sixteenth

4. Identify the following Key Signatures:



\_\_\_\_\_ Major



\_\_\_\_\_ Major



\_\_\_\_\_ Major

Performance Portion:

1. Play the following G Major Scale alternating i, m  
with good tone and legato style:

